



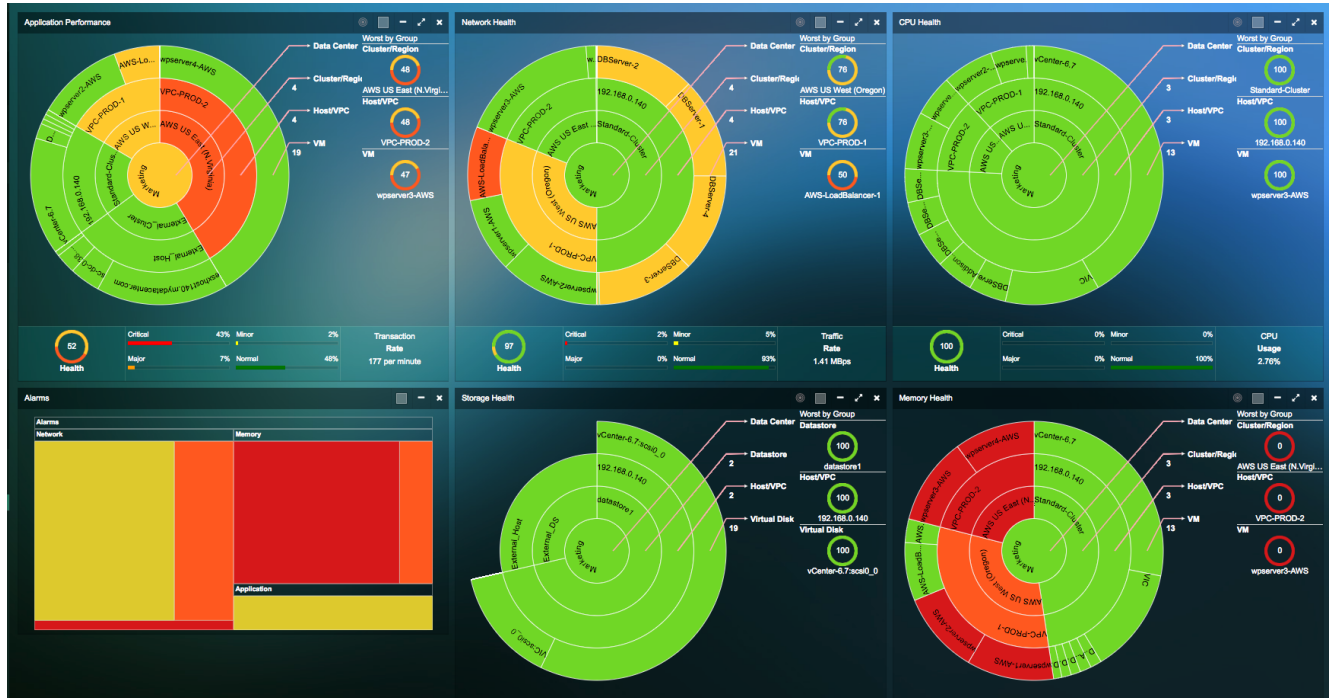
Version 2.0
Release Notes – 09/10/2018

Table of Contents

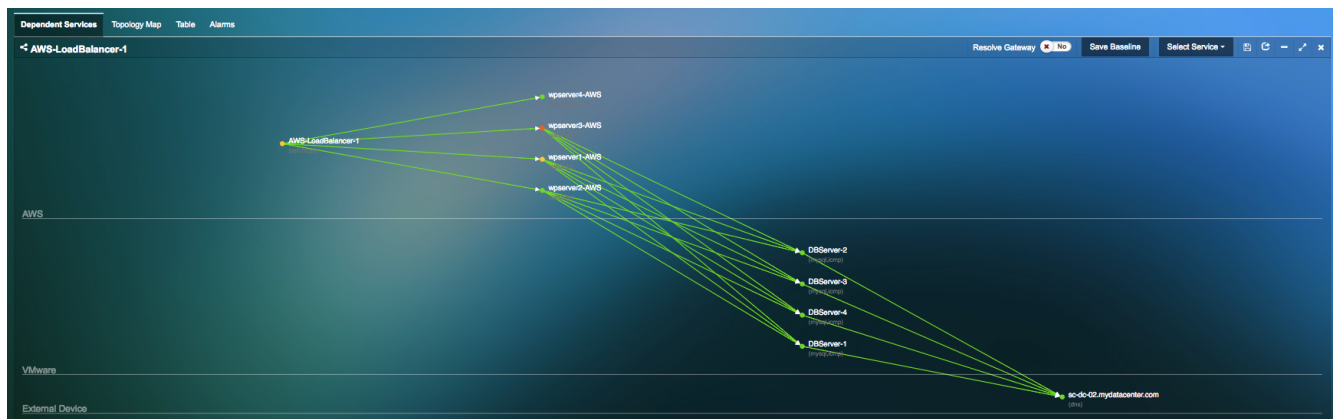
New Features.....	2
Enhancements	6
Bug Fixes	10
Contact Uila Support	10
About Uila	11

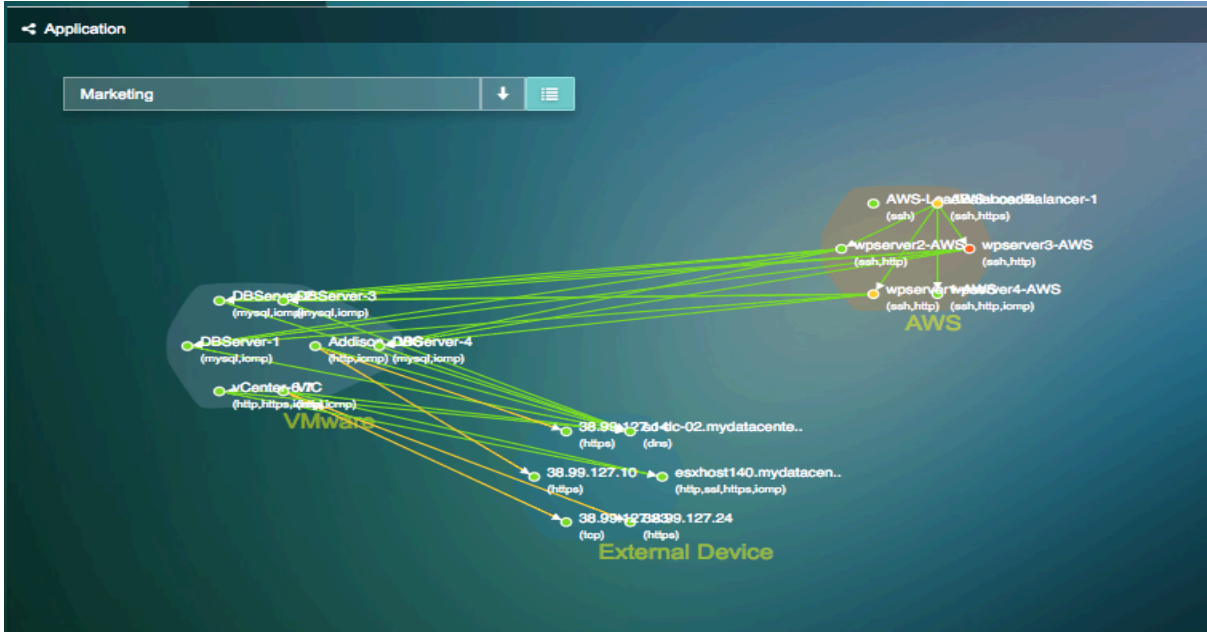
New Features

- Multi-Cloud monitoring** – Uila provides a single pane of glass for end-to-end visibility into performance, capacity and resource usage/allotments across all on-prem and cloud-hosted services (VMware, Microsoft Hyper-v based environments, Amazon Web Services, Microsoft Azure, Google Cloud & other Cloud provider deployments). This allows cloud teams to proactively identify service degradation issues from the user's perspective before any user impact.



- Multi-Cloud Application Dependency Mapping and Topology**– With Uila's multi-cloud Application Dependency Mapping, cloud teams are armed with deep insight that helps in pinpointing resource or cloud provider bottlenecks for poor performance of workloads spanning multiple clouds or for workload migrations across multiple cloud providers.





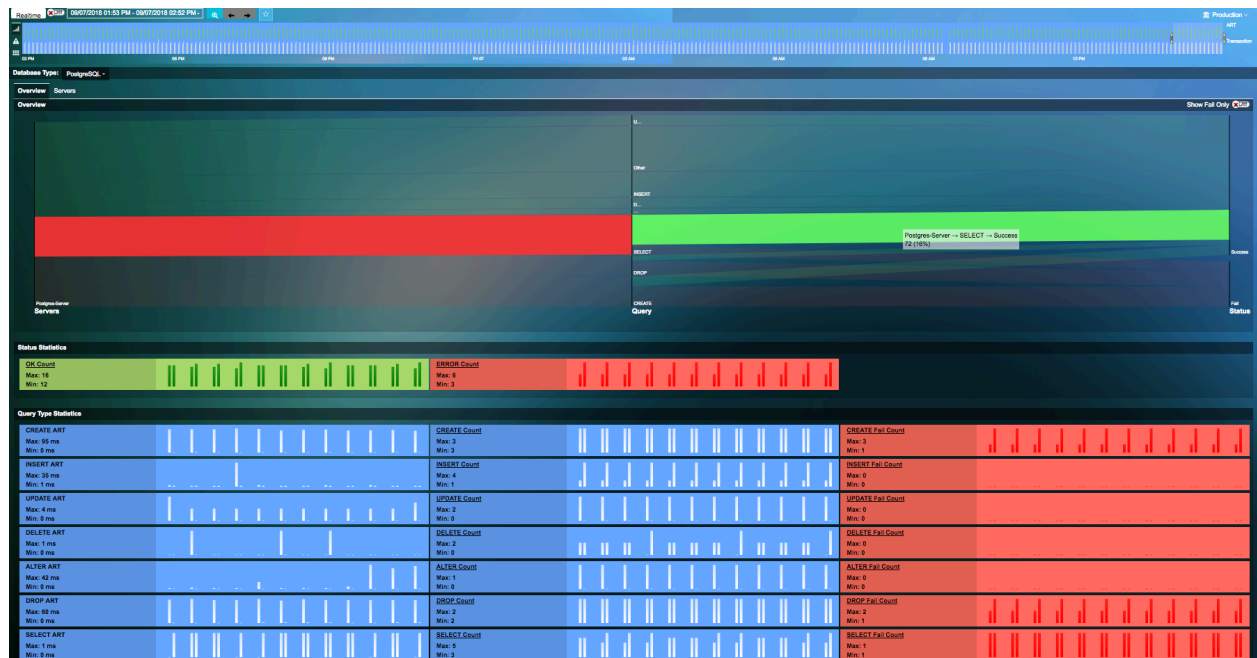
- **Multi-Cloud End-to-end IP based network conversations** - With Uila's multi-cloud capabilities, users are now able visualize network traffic metrics from end to end.

VM A	VM B	トータルトラフィック	A → B	B → A	RTT	リトライ	サービス	ART	トランザクション	サービストラフィック
AzureXen	o	7.60 KB	5.75 KB	1.86 KB	0 ms	0/0	office365	703 ms	0	7.60 KB
	S	456.34 KB	197.51 KB	258.82 KB	1 ms	0/0	ldap	0 ms	0	190.76 KB
	o	25.13 KB	10.94 KB	14.19 KB	0 ms	0/0	krb5	0 ms	0	58.53 KB
	o	84.03 KB	45.79 KB	38.24 KB	0 ms	0/0	msrpc	0 ms	0	10.18 KB
	o	23.28 KB	14.48 KB	8.80 KB	0 ms	0/0	epm	0 ms	0	15.47 KB
	o	11.82 KB	8.25 KB	3.57 KB	0 ms	0/0	smb	0 ms	1	181.41 KB
	o	45.17 KB	20.34 KB	24.82 KB	0 ms	0/0	https	0 ms	0	11.76 KB
	o	13.27 KB	7.26 KB	6.01 KB	0 ms	0/0	outlook	43 ms	0	13.37 KB
	o	70.95 KB	40.08 KB	30.87 KB	0 ms	0/0	outlook	49 ms	0	42.96 KB
	o						office365	0 ms	0	41.07 KB

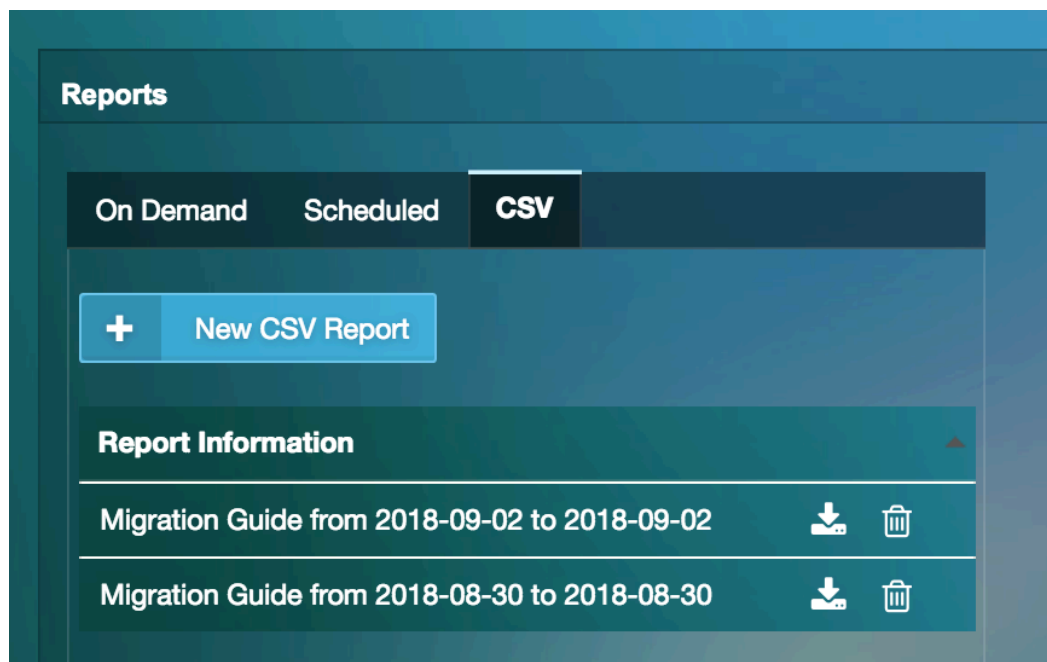
- **Resource provisioning reports** – Optimize cloud costs and coordinate between cloud governance teams and resource owners (cloud IT teams) based on actual usage and uncover inefficiencies to reduce waste. You can visualize under-provisioned hosts or instances leading to application performance issue. Also you can visualize money left on the table with over-provisioned cloud assets across multiple cloud providers.

VM Name	CPU						Memory			
	Capacity (MHz)	core(s)	Avg Usage(%)	Peak Usage(%)	Top 10% Peaks Avg(%)	Over Provision Rec.	Capacity (MB)	Avg Usage(%)	Peak Usage(%)	Over Provision Rec.
VIC	6500	2	0.8	6.7	2.5	-1 core	4096	13.5	67.4	
vCenter-6.7	6500	2	2.4	2.9	2.8	-1 core	10240	12.5	15	-5120MB
DBServe r-1	3250	1	0.5	0.8	0.7		2048	2.6	4.4	-1024MB
DBServe r-2	3250	1	0.5	0.8	0.7		2048	2.8	4.1	-1024MB
DBServe r-3	3250	1	0.5	1	0.7		2048	2.7	4.7	-1024MB
Addison - VIC	6500	2	0.3	0.3	0.3	-1 core	4096	1.6	2.5	-2048MB
DBServe r-4	3250	1	0.5	0.8	0.8		2048	2.7	4.4	-1024MB
wpserve r1-AWS	2400	1	0	0	0		994	0	0	
wpserve r2-AWS	2400	1	0	0	0		994	0	0	
AWS-LoadBalancer-2	2400	1	0	0	0		994	0	0	
AWS-LoadBalancer-1	2394	1	0	0	0		994	0	0	
wpserve r4-AWS	2400	1	0	0	0		994	0	0	
wpserve r3-AWS	2400	1	0	0	0		994	0	0	

- Transaction analysis for PostgreSQL Database** - Uila provides deep insights into PostgreSQL database application to allow for the issues to be narrowed down and mitigated. You get detailed Query drill down and identify the transactions that are slowing you down.



- **Generate CSV report for cloud migration** – Export Application Dependency Mapping results for Cloud or Data Center Migrations from the Reports screen.



- **Support for VMware vCenter 6.7** – Uila’s solution now supports integration with VMware vCenter 6.7.

- **Client statistics based on Application transaction records** – In the new release you can now visualize client statistics for all the applications (HTTP, DNS, Database) that are supported in the Application transaction analysis.

With this new table, you are now able to answer some of the critical questions like:

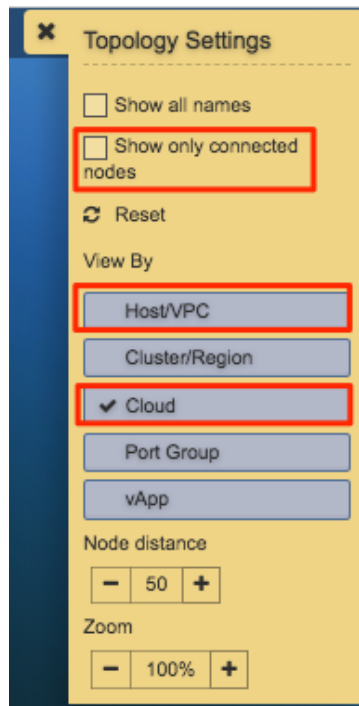
1. which client is the heavy talker on my DB server?
2. which client initiates problematic requests that incur transaction errors
3. which client suffers from long end user response time?
4. which client suffers networking issues?

You can get this from the Network Conversations Tab within the Transaction Details Table.

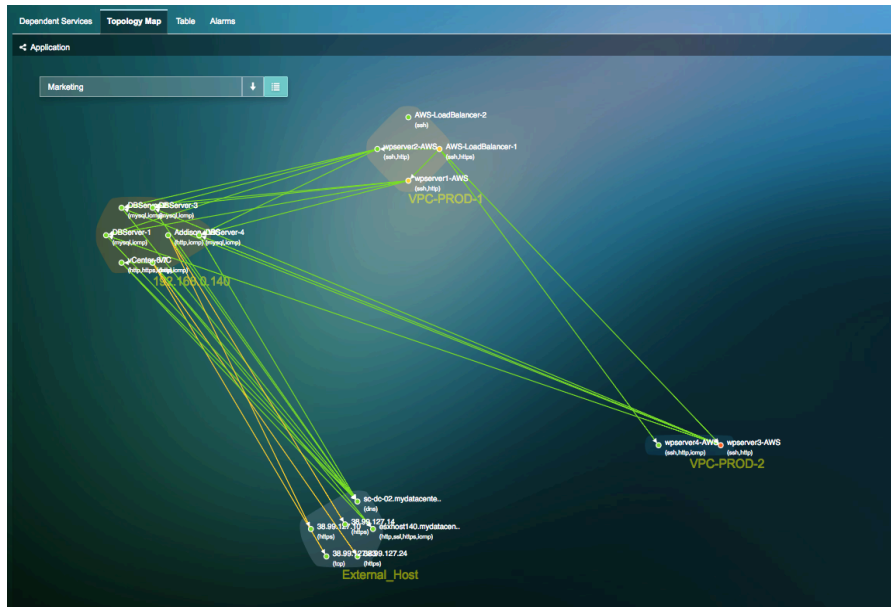
Client	Server	Service	EURT	ART	Net Delay	Traffic	Retry	Zero Window	Transactions
192.168.0.198	Apache_2.4-s1 (192.168.0.83)	http	3017.520	3017.044	0.475	924 B	0	0	11
65.235.20.163	APP-LB-001 (65.235.20.53)	http	2312.141	2293.424	10.162	114.81 KB	0	0	11
APP-LB-001 (192.168.0.52)	Apache_2.4-s1 (192.168.0.83)	http	2309.742	2291.851	5.729	33.72 KB	0	0	11
APP-LB-1001	Weblogic_11g-s1002								

Enhancements

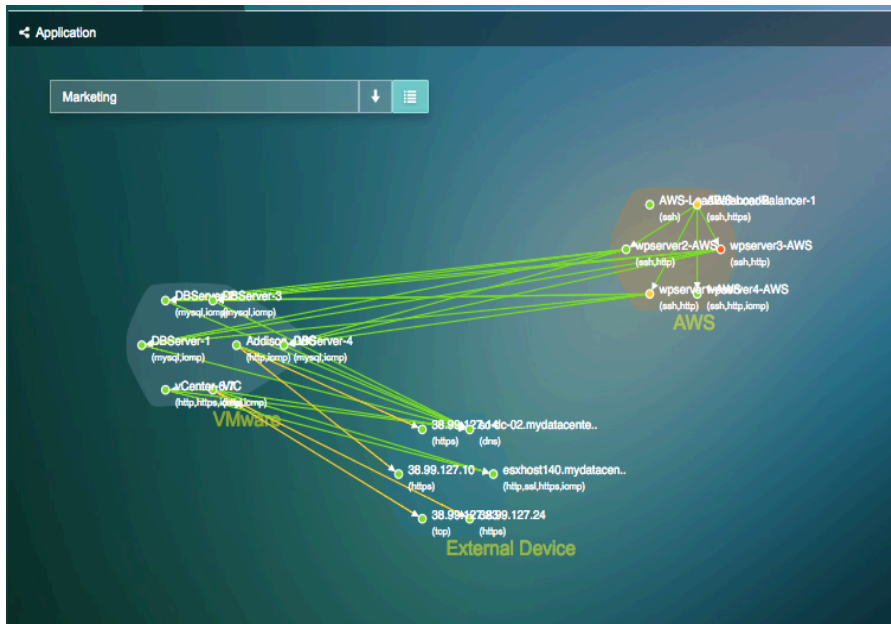
- **Added new view settings into Topology Map Settings**



- View by Host/VPC



- View by Cloud



- Show only connected nodes

- **Display External Device by IP/Subnet or MAC address** – External devices may include physical servers, VMs in a separate Data Center, gateways, firewall, load

balancer, client devices, VM running in any cloud provider’s platform, network switches, etc. Now the user can display those external devices in their Application Dependency Map by entering its IP address. This is enabled from the Settings→VIC configuration menu.

Force Display External Device by IP/Subnet

Cloud Type	Cluster/Region	Host/VPC	Summary	Actions
Generic Cloud	Internet	Internet	98.137.246.8/32	
Generic Cloud	Internet	Internet-US	5.22.148.135/32,10.10.10.1232,8.8.8.8/32	
Google Cloud	G-Cluster	G-Host	192.168.1.175/32	
Physical Server	CCK-Cluster	CCK-Host	192.168.1.122/32	
Physical Server	uila	uila-umas	38.99.127.23/32	

Force Display External Device by MAC Address

Device Name	Mac Address	Actions
Cisco Switch 1	00:0D:30:56:7B:C1	

- **Custom web Application** – User can now define separate HTTP-based web applications based on the URL of the application.

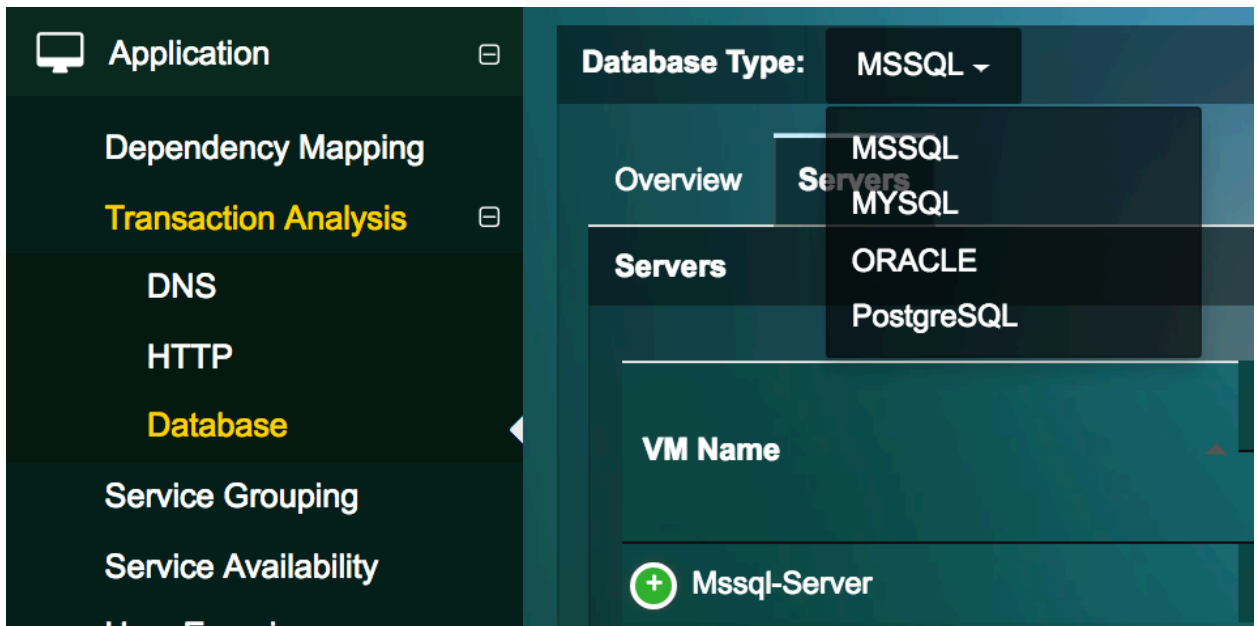
Custom Web Application(s)

Name	URL Prefix	Actions
test-picture	/picture.jpg	
kimi	/sample-page	

- **New table view for CPU, Memory, Storage, Application and Networking analysis pages**



- **Allow one device to be added into multiple service groups**
- **Group various DB protocols under Database type** – Individual Databases can now be selected from a drop down menu for transaction analysis visualization.



- **Make scroll much easier when the scroll bar is not visible on some web browsers-** For users using a mouse, you can use the mouse wheels to scroll up and down. For users with an Apple MacBook touch pad, you can use two fingers to swipe up and down to scroll.
- **Added control buttons to zoom in/out on network flow analysis and storage usage views**



Bug Fixes

- **UILP -4753** - Missing .pdf file extension in report email
- **UILP-4939** - Cannot see actions on the tooltip when the user clicks on portgroup within the topology map
- **UILP-4660** – Network analysis view minimizes/maximizes when the user scrolls over the chart

Contact Uila Support

Uila software solutions are designed with ease of installation and simplified maintenance in mind. The Uila team is dedicated to exceeding your expectations, and knows that any downtime is too much in today's competitive world. Our goal is to keep your applications running 24 X 7. We offer a simple and effective support program to meet your needs.

Customers who purchased Uila products and under support contract will receive the following benefits:

- Unlimited support via email or phone call
- Free software minor release update
- Free software major release upgrade

Email: support@uila.com

Phone: (408) 819-0775

About Uila

Uila provides Multi-Cloud Monitoring & Analytics in a single pane of glass for the Digital Enterprise. With Uila, IT Operations and Cloud IT teams can visualize application workload dependencies across cloud platforms, right size resources and investments for their workloads and plan workload migration strategies for Hybrid and Multi-Cloud deployments. IT teams can also identify performance bottlenecks for business-critical services using full-stack correlation with 1-click root cause analysis and a patented Deep Packet Inspection technology that understands over 3,000 application protocols for transactional meta data analysis. Businesses use Uila to align themselves with their IT teams and cut time to resolution from days to minutes, keep their application at peak performance at all time and ensure end-user satisfaction to the fullest across cloud boundaries.